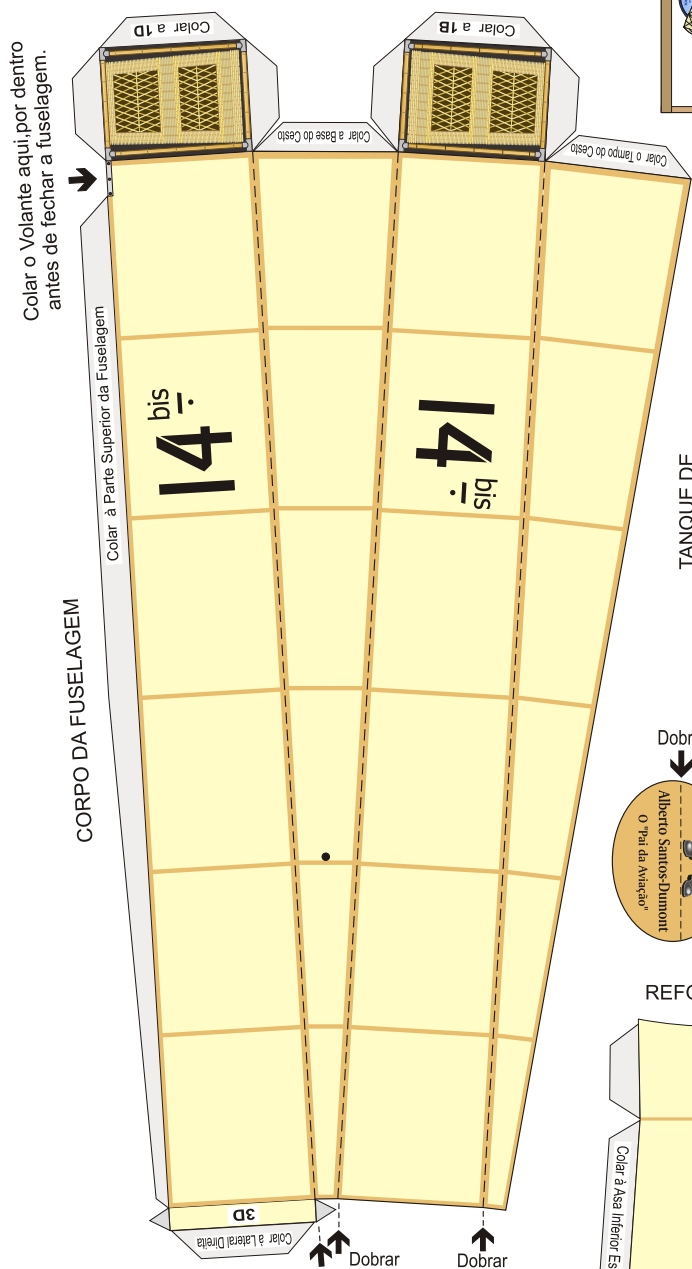
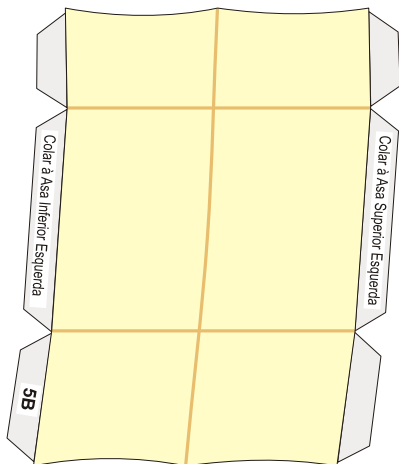


COMPARTIMENTO DO MOTOR

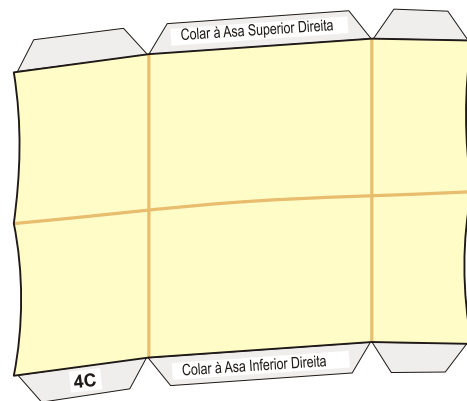


CORPO DA FUSELAGEM

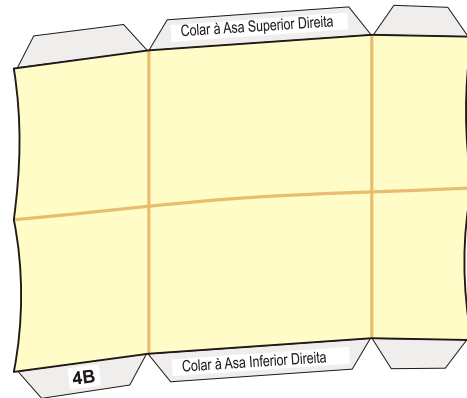
REFORÇO DE ASA ESQUERDA



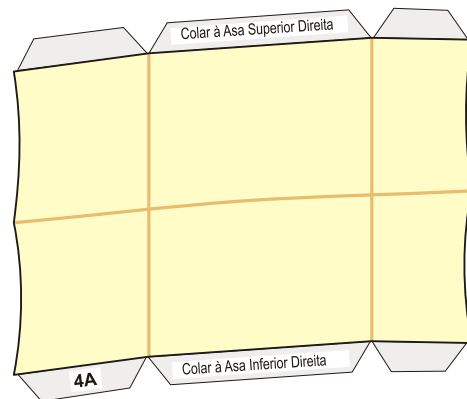
REFORÇO DE ASA DIREITA



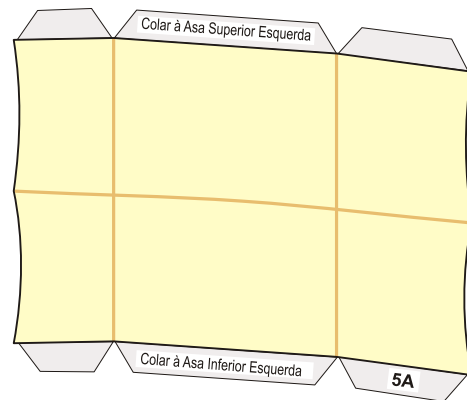
REFORÇO DE ASA DIREITA



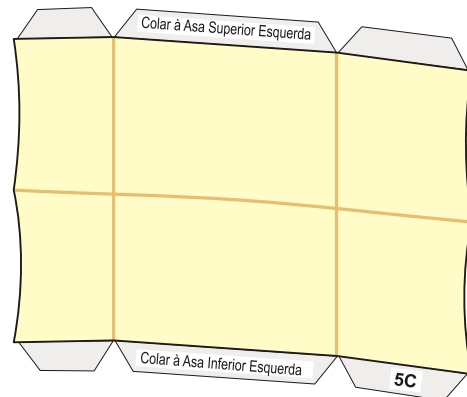
REFORÇO DE ASA DIREITA



REFORÇO DE ASA ESQUERDA



REFORÇO DE ASA ESQUERDA



O "14-Bis",  
como em 23/10/1906.

Modelo para Montar

© 2006 LANE DESIGN  
www.lanedesign.com.br